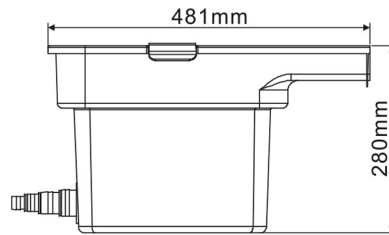
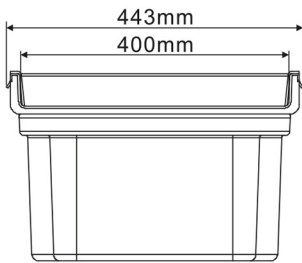
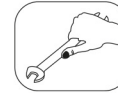
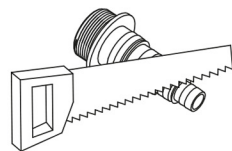


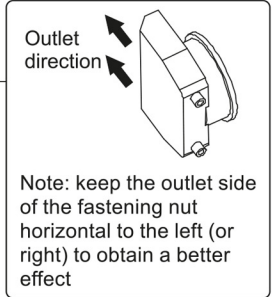
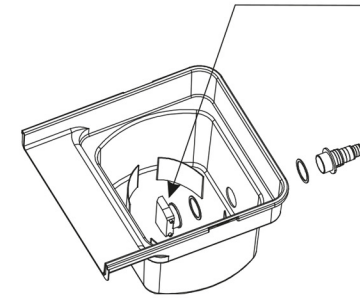
KG 4.05kg



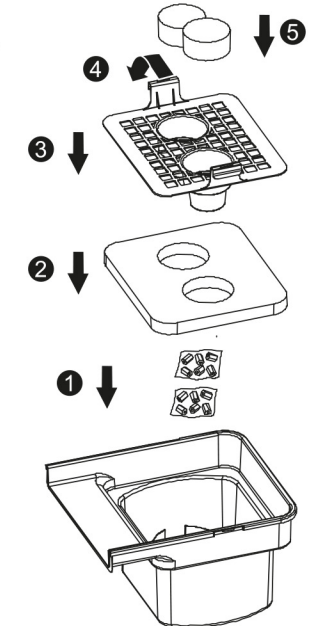
1. For maximum amount of water, pls cut the interface as shown on the right. Please refer to the diameter of the water pipe for specific dimensions.
Suggestion: Use the maximum diameter water pipe compatible with the pump to achieve the maximum flow rate.



2. Install the fastening nut, gasket(2) and inlet as shown in the figure below.



3. Put the bio ring and sponge into the container in turn, then put on the plate, and fasten the container with the clips at both end, finally, put the planted sponge (if cleaning, the order is reversed).
Note: According to the purchase note, step 5 may be planted sponge or other biochemical material (take planted sponge as an example).



Limited Warranty

This product is guaranteed for a period of 12 months from the date of purchase for material or manufacturing defects. The guarantee covers the substitution of defective parts. However, the guarantee is considered null and void in the case of improper use, improper handling or negligence on the part of the buyer. If your PondXpert item fails please take it back to the retail outlet from where it was purchased. You will be required to provide your receipt/proof of purchase. This does not affect your statutory rights.