

Aquavac Vacuum

Introduction

The Aquavac works by removing debris and sludge from the pond and catching debris within the attached mesh bag

How it works

At the bottom of the Aquavac is a simple plastic valve. As the plunger is drawn upwards it allows water and sludge to be drawn up the vacuum pipe. The plunger is designed such that the plunger fits snug within the pipe when the plunger is drawn upwards, when pushed downwards it is flexible enough to allow water and sludge to pass. When the plunger is drawn up again the sludge that has passed will then be expelled via the tap into the mesh bag.

Please note that if any debris or for example gravel is not able to pass when the plunger pushed down then the Aquavac will need to be dismantled to allow its removal

Loosen the large hand nut and pull the tap part until it comes out of the innertube visible just above the top of the thread at the bottom of image 1 which shows the product at its minimum length. You can then pour out any trapped sludge or debris.

Image 1



Take care not to misplace the split plastic collar or large o-ring

If you need to extend the unit, pull the inner tube upwards, refit the o-ring, split collar, handnut and tighten to keep at the desired length. If you have already used the unit and it has got wet, it may be difficult to pull the inner tube up

to extend the Aquavac. In this case, turn the product upside down and push the plastic valve open. Just below you will feel the bottom edge of the inner tube and give it a small tap just to loosen the inner tube.

Image 2



The tap part is simple push fit into the inner tube and you should end up with the product looking like image 2

The net bag has fine mesh, magnified in image 3 , although this will catch debris it will not remove fine particles, you could add a piece of filter foam to the mesh bag to accommodate this as the finer particles will get trapped in this. Image 4 shows the debris caught within the mesh bag. When using the Aqua vac debris within the pond will be stirred up and come to the surface but this will subside and a lot of this will be drawn into a filter if in use.

Image 3

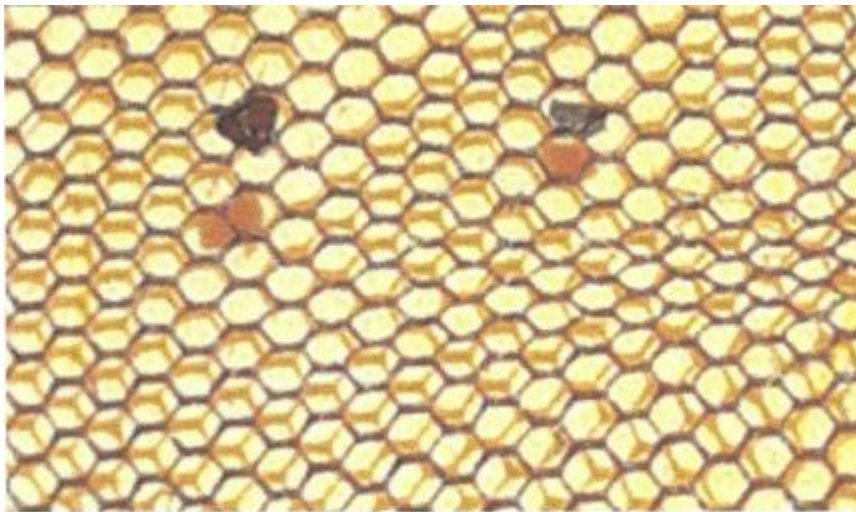
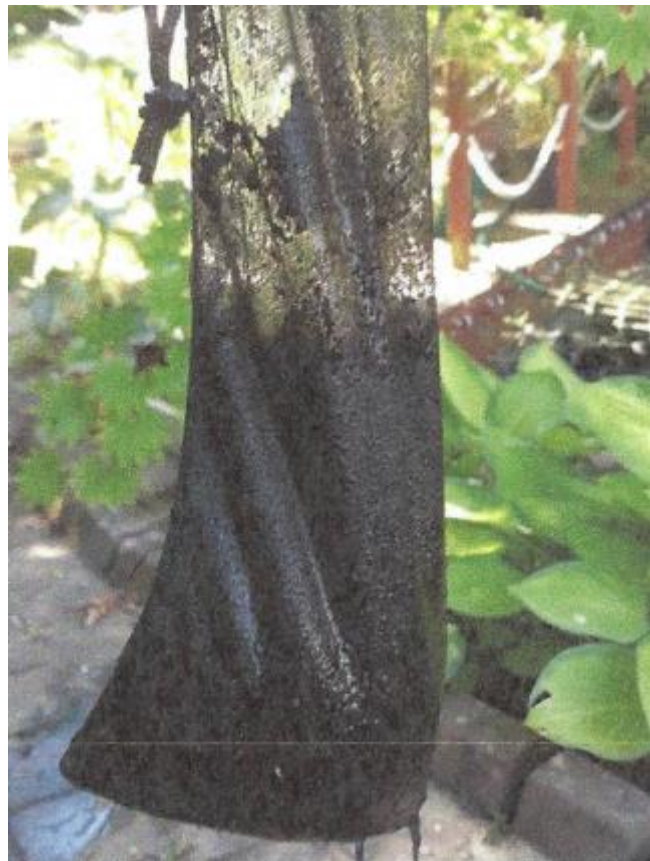


Image 4



PondXpert
A3 Bentley Avenue
Billingham
TS23 4BU
UK

