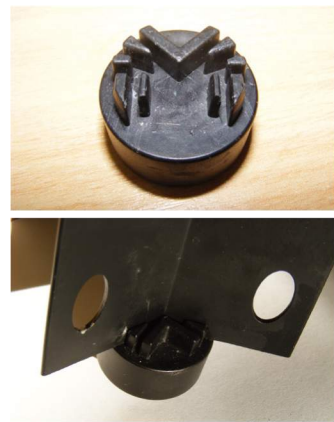


Step 14

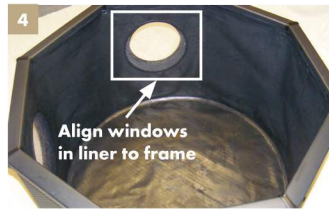
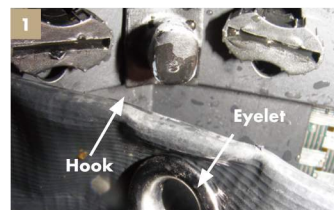
Check all parts are secure and correct and then attach the supplied feet (part 8) to the end of the 8 legs (part 4). These clip into place easily and ensure the pond is level and secure.



Step 15

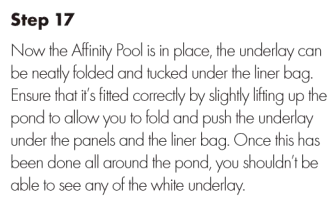
Now between two people it is time to turn over the Affinity Pool and Insert the Liner Bag (Part 3). Place the Liner Bag inside the Affinity pool and carefully unpack it to fit inside like in image 4 below. You will see that on image 1 that a hook is present on the trident section (part 11), this enables you to hook each eyelet on the liner to the hook on the trident connector. After this, using the Plant Basket Fixing Pins attach the Liner Bag to the Top Rails using the holes provided, see image 5. Ensure the liner is positioned with the windows correctly lined up with the windows on the Mocha Window panels, see exploded diagram and image 4 for reference.

To be able to hook the liner easily, the eyelet on the liner must be raised 90 degrees to the hook and pushed to the back of the hook before allowing the eyelet to drop down behind and become secure as shown in images 2 and 3 below. Continue to do this to 7 of the eyelets around the pond but keep one free as shown in image 6.



Step 16

Place the Inpond All-In-One inside the pond and thread the low voltage pump cable and the UVC cable between the liner bag (part 3) and the Mocha Weave panel (part 12). Use the section of liner that you didn't hook onto the trident connector, keeping the cables tidy and out of harms way. See Inpond instructions on how to set up the filter correctly. Do not turn on the Inpond at this time.

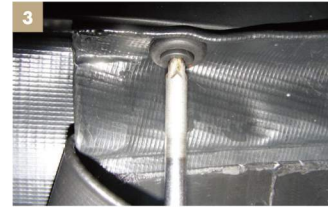


Step 17

Now the Affinity Pool is in place, the underlay can be neatly folded and tucked under the liner bag. Ensure that it's fitted correctly by slightly lifting up the pond to allow you to fold and push the underlay under the panels and the liner bag. Once this has been done all around the pond, you shouldn't be able to see any of the white underlay.

Additional baskets are available to purchase individually. Use pond compost to plant your chosen aquatic plants.

Tip: To help hide the filter cables use the planting basket on the panel where the cables come through as in the image on step 18.



Step 18

Two planting baskets (part 5) and eight planting basket fixing pins (part 6) are supplied which allows you to have a plant basket on any panel of the Affinity Pool. Each top rail has four centre holes underneath that allow the planting basket to be pinned in with the fixing pins supplied. The grip of the pin can be adjusted using the inside screw to remove or adjust tightness as in image 3. If you need to remove a planting basket reverse this process with a cross threaded screwdriver.



To keep your Affinity Pool windows clean, use ONLY the Affinity anti-scratch window cleaning pads code 1051200. Any other material may scratch or damage the windows. Polymer wool pads supplied are for the Inpond all-in-one filter, (see instruction manual).

All these items are available as replacements from your retailer.

For further information, see our website: www.affinitypools.co.uk

Guarantee: This product is guaranteed against defects in material and workmanship for 3 years from the date of purchase, under normal usage. The guarantee DOES NOT APPLY in case of improper use, negligence, lack of maintenance or accidental damage to the Affinity Pool. If the Affinity Pool fails due to a manufacturing fault within this period it will be either repaired or replaced free of charge. Liability is limited to replacement of the faulty product only; no other costs will be reimbursed.

This guarantee is not transferable and does not affect your statutory rights. This guarantee does not confer any rights other than those expressly set out above. Excludes consumable parts (pump Impellor, LED light & UVC lamp). If any parts are needed, spares are available from your retailer. Please see the Inpond 3000 instructions for more information and part descriptions.

IMPORTANT: PLEASE ATTACH PROOF OF PURCHASE TO THIS MANUAL AND FILE IN A SAFE PLACE.



Consumer Advice Contact Information

Interpet (Blagdon) Consumer Advice Department,
Vincent Lane, Dorking, Surrey RH4 3YX
Fax: 01306 876712 E-mail: customercare@interpet.co.uk
www.affinitypools.co.uk



Environment Friendly Disposal
You can help protect the environment! Please remember to respect the local regulations and hand in any non-working electrical equipment to an appropriate waste disposal centre.



affinity®
living feature pools

grand octagon

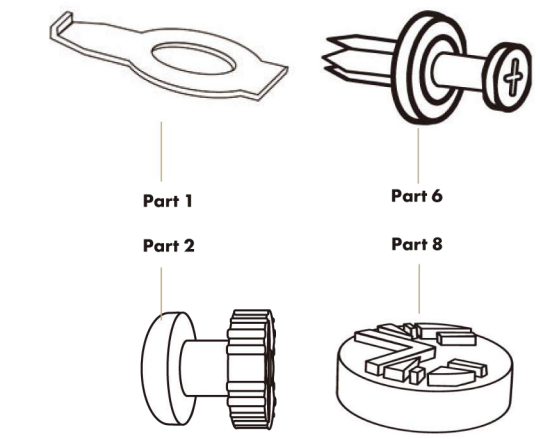
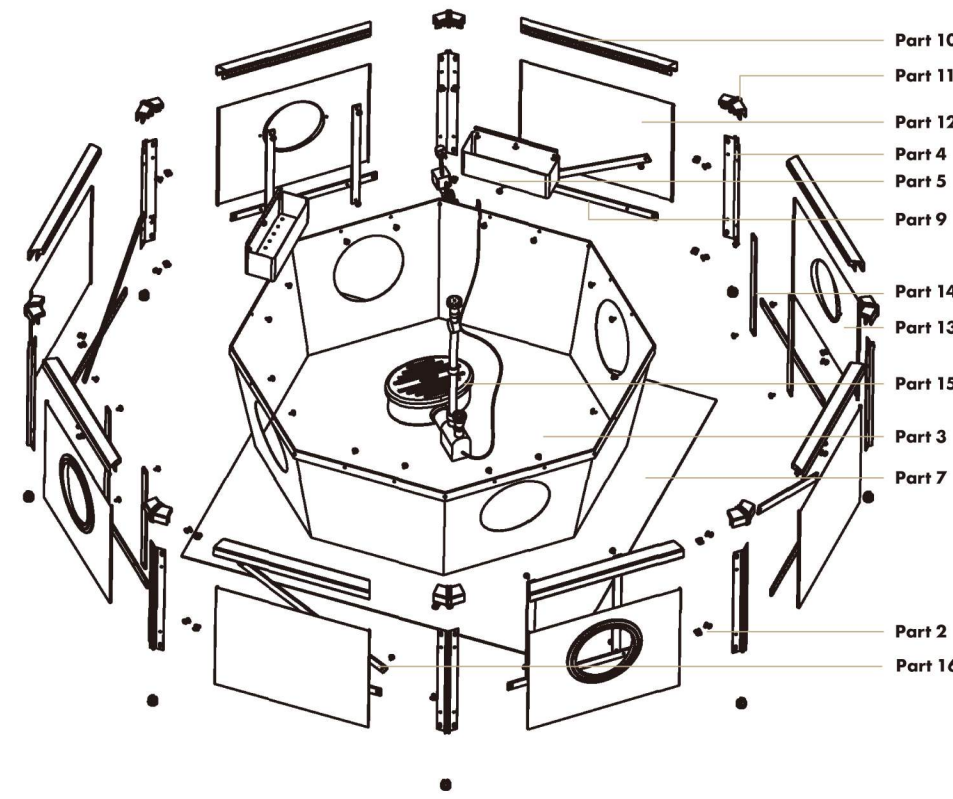
mocha weave & black aluminium
instructions



Liberty Mains Free Features have been designed by Blagdon, a leading British water gardening company. Over half a century in fish keeping and water gardening are brought together in this product, so you can be assured of a successful, creative water feature.

Grand Octagon Assembly Instructions

Getting to know your Affinity living feature pool



Part List

Part Description	Quantity	Part No.
Tool	1	1
Plastic keys	32	2
Octagon liner	1	3
135 Degree Legs	8	4
Planting Basket	2	5
Planting Basket Fixing Pins	46	6
Underlay	1	7
Leg Feet	8	8
Leg Cross Braces	8	9
Top Rails	8	10
Trident Connectors	8	11
Mocha Weave Panels	4	12
Mocha Weave Window Panels	4	13
Vertical Bracing Bar	8	14
Blagdon InPond 3000 Filter	1	15
45 Degree Angle Non Window Panel Bracing Bar	4	16

Step by Step Guide

Step 1
Please remove all of the relevant parts from the packaging and double check that all of the items are there (use the complete parts list and exploded diagrams to check this)

At the end of this step all 8 tridents and top rails should be slotted together as in image 3 and the image on step 5.



Step 2
Identify a suitable area where your Affinity Pool can be placed, ensure that the area is level with a firm base and is free from stones or any other debris that could damage your liner bag.

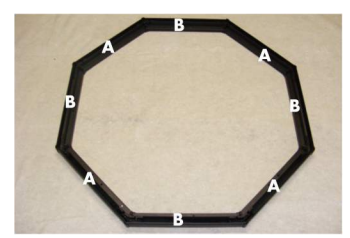


Step 3
Using your supplied underlay (part 7) lay it flat over the cleaned area ensuring it covers the entire area where the liner will sit. Underlay is a protective material that prolongs the life of your liner and stops any possible unwanted leaks in the future.

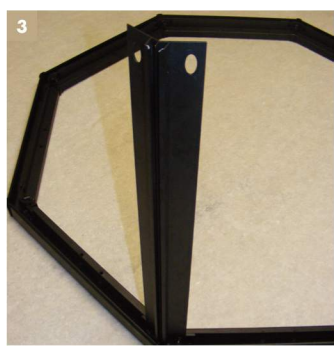
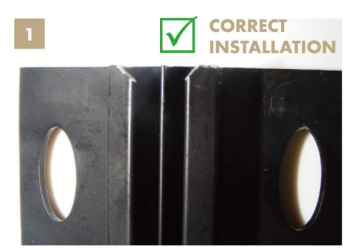


Step 4
Now using the top rails (part 10) and the trident connectors (part 11) connect them together into an octagon shape, each top rail is labeled either A or B and needs to be in line as the image on step 5. The trident connectors in image 1 allow the top rails to slot into each other easily, ensure the bottom oval hole is completely free. Image 2 shows the oval hole slightly blocked which means it's not 100% fitted correctly.

Step 5
Your top rails and tridents should look like the image below and should be ready to insert the 135 degree legs (part 4) as per step 6.



Step 6
Using the legs (part 4), insert them into each of the trident connectors (part 11) as per images 2 & 3. Ensure the cut in sections (as per Image 1) are not inserted first but are located at the top of the leg once inserted and line up with the oval holes. Continue to do this to all 8 tridents and all 8 legs provided.

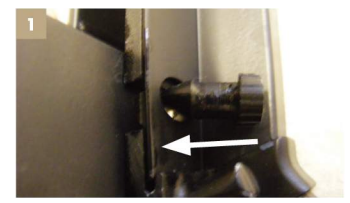


Step 7
Your Affinity Pool should now have all 8 of the legs (part 4) inserted the right way up and be ready to have the plastic keys (part 2) inserted at the bottom of the top rails (part 10). It should look like the image below with all 8 legs inserted.



Step 8
This step requires you to use exactly 16 of the plastic keys (part 2). Insert them into each of the oval holes at the base of the tridents (part 11) on both sides, 2 per trident. Image 1 & 2 shows the first keys being inserted into the oval holes. As per step 4 image 2 the oval holes must not be covered but be completely free and open to ensure the keys can fit in easily. Continue to insert all 16 keys as per image 2.

Now using the supplied tool (part 1) turn the keys a quarter turn so they lay flat and lock into position as per image 3. Continue to do this to all 16 keys around the base of the pond until all 8 legs are firmly connected to all 8 of the trident connectors.



Step 9
Now would be a good time to look at the exploded diagram and take note of the position of each of the windows on the liner bag (part 3). The windows on the liner bag will dictate where the Mocha Weave panels can be inserted into the legs (part 4). The Mocha Weave panels are divided between A and B and help guide you on which panel needs to go where. Identify the non window panels first, labelled B (part 12) and slot them into the correct legs, see exploded diagram and step 10 for reference. You will have to use two hands and slot both sides of the panel at the same time to ensure it fits easily and correctly between the legs to the bottom rail, see image 5 for reference.

The correct legs will be dependant on the bottom rail which will be labelled B. Image 1 shows how to slot the panel into the leg section, ensure the panel is facing the correct way before inserting by taking note of the label on the panel.

Labels on the panels which have "to the inside" on them means the side of the panel that needs to face inwards of pond when slotting them into place.

Tip: When sliding the panels into the curved slot sections on the 135 Degree legs ensure the panels are wet with water. This will aid the slotting process of all the panels into the legs.

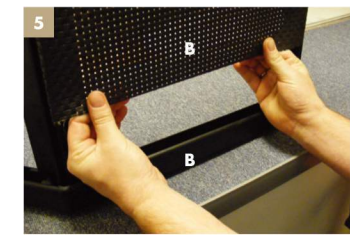
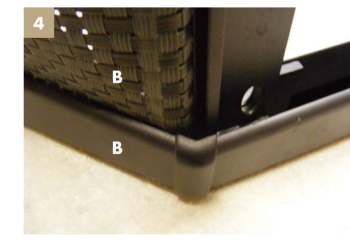
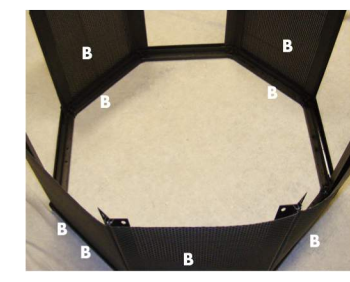


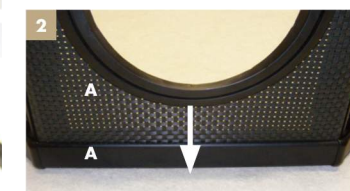
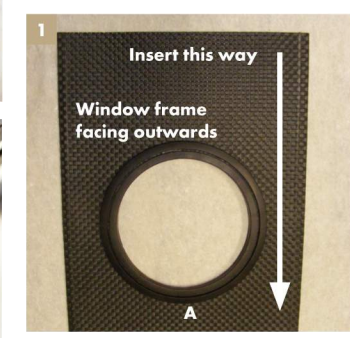
Image 2 and 3 show how the panel should be installed correctly, when the panel is correctly slotted into the bottom of the leg it should slot behind the top rail nicely as in image 4.

Step 10
Once all the non window panels B (part 12) have been inserted it should look like the below image. The sections without panels are where the window panels labelled A will have to be located because of the position of the windows on the liner bag (part 3).



Step 11
Now the window panels (part 13) can be inserted into the remaining empty sections on the Affinity Pool frame. Image 1 show that the window panels must be inserted with the window frames facing outwards and be slotted into the legs that way down with the window closer to the top rail (part 10). Image 2 shows that the window panels need to be slotted in this way to ensure it matches up with the window on the liner bag (part 3) later.

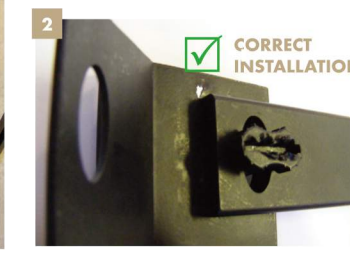
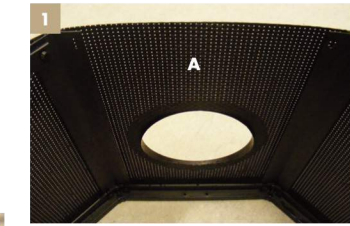
Labels on the panels which have "to the inside" on them means the side of the panel that needs to face inwards when slotting them into place.



Step 12
Now using the leg cross braces (part 9) and the remaining 16 plastic keys (part 2) attach 2 of them to each of the 8 legs.

Important: Do not lock any of the keys until all the cross braces have been loosely inserted with the keys into the 8 legs. Locking them one at a time will prevent you from assembling the final leg cross brace easily.

Using the provided tool (part 1) turn all 16 keys a quarter turn so they lock into position as per image 2. Once all the leg braces and keys have been attached and locked the Affinity Pool should start to feel secure and strong like in image 3.



Step 13
Now using the 8 Vertical Bracing Bars (Part 14) for the 4 window panels, attach two per panel by using 16 fixing pins (Part 6). Attach them to the holes provided in the top rail and leg cross brace. Next attach the four 45 degree angle non window panel bracing bars (Part 16) diagonally between the legs using the holes provided with 8 fixing pins (Part 6).

