

IMPORTANT

Please attach proof of purchase to this manual and file in a safe place.



Established over 40 years ago, Blagdon are committed to producing a comprehensive range of high quality, easy to use, pond equipment. An ongoing programme of research and development ensures excellent performance and value for all their customers. This product excellence is demonstrated by Blagdon's award winning range of water gardening equipment. As a result Blagdon's reputation for quality is unrivalled amongst experienced pond gardeners and retailers alike.

Blagdon - The Pond Masters
The name you can rely on

Interpet
Dorking, Surrey, RH4 3YX

Leaflet Code: POS 0008



THE POND MASTERS
GUIDE TO

HYDRATECH
MULTI

800/1500/2500/3250/
4000/6000



THE POND MASTERS GUIDE TO HYDRATECH MULTI

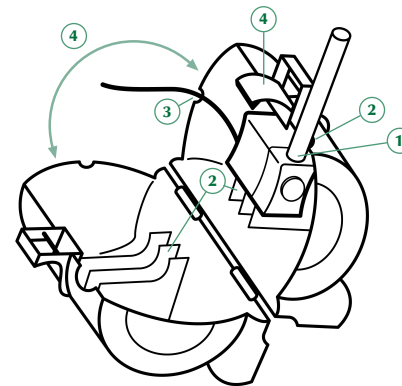
Congratulations on buying a Blagdon Hydratech Multi Pump. Hydratech Multi pumps are high quality pumps manufactured with advanced technology, to run pond fountains, waterfalls, filters and water features. The powerful motors are easy to maintain having a single moving part impeller system featuring highly wear-resistant ceramic shaft design.

CONTENTS

Getting to know your Hydratech Multi pump	1
Opening and closing cage / inserting and removing pump	1
Parts descriptions / spares codes - with exploded diagrams	2-5
Pump performance / flow chart	6
Technical specifications	6
Installation	7
Electrical installation	7
Installing pump in pond	8-9
Maintenance and cleaning	9
Cleaning	9
Step by step guides	9-11
Routine maintenance	9
Monthly maintenance	10
Annual maintenance	11
Winter storage	11
Troubleshooting	12
Troubleshooting and maximising performance	12
Faults - problem procedure	13
Consumer advice contact details	13
Returning faulty pumps	13
Guarantee	13

GETTING TO KNOW YOUR HYDRATECH MULTI PUMP

OPENING AND CLOSING CAGE INSERTING AND REMOVING PUMP

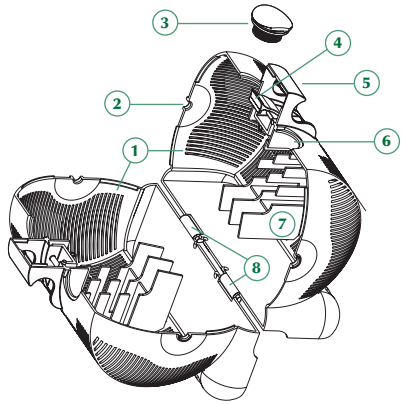


- ① Ensure **telescopic pipe** is screwed into **pump outlet**.
- ② Lay the pump on half the open cage and match up the **telescopic riser pipe** with the **pump outlet hole**, ensuring the pump rests on the **supporting brackets**.
- ③ Insert cable into the **cable outlet hole**.
- ④ Close the cage halves together and secure with the **locking clip**.

To open and remove: Reverse steps 1-4 above

GETTING TO KNOW YOUR HYDRATECH MULTI PUMP

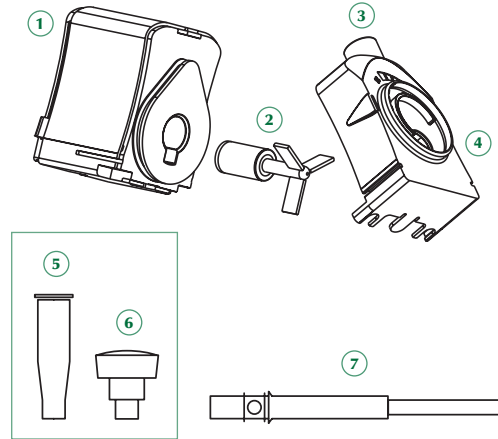
**HYDRATECH MULTI 800/1500/2500/
3250/4000/6000 PRE-FILTER CAGE**



No.	Pre-filter Cage Part Description	Spare Code
1.	Pre-filter cage	N/A
2.	Cable outlet hole	N/A
3.	Light port (not on 800 model)	1040723
4.	Locking clip	1040730
5.	Carry handle	N/A
6.	Pump outlet hole	N/A
7.	Pump support brackets	N/A
8.	Filter cage hinges	N/A

GETTING TO KNOW YOUR HYDRATECH MULTI PUMP

HYDRATECH MULTI 800

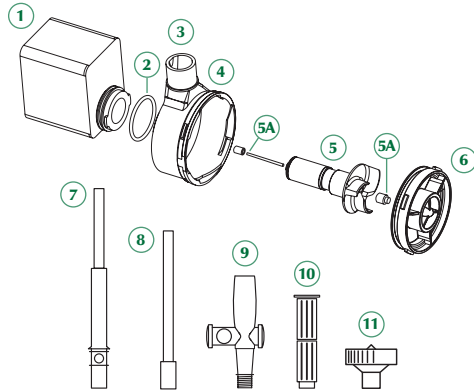


No.	Hydratech Multi 800 Part Description	Spare Code
1.	Pump motor unit	N/A
2.	Impeller complete	1040815
3.	Pump outlet	N/A
4.	Impeller cover	N/A
5.	Water bell	1040747
6.	Double Daisy	1040747
7.	23cm telescopic riser pipe	1040761

Parts 5 and 6 are supplied as one package.

GETTING TO KNOW YOUR HYDRATECH MULTI PUMP

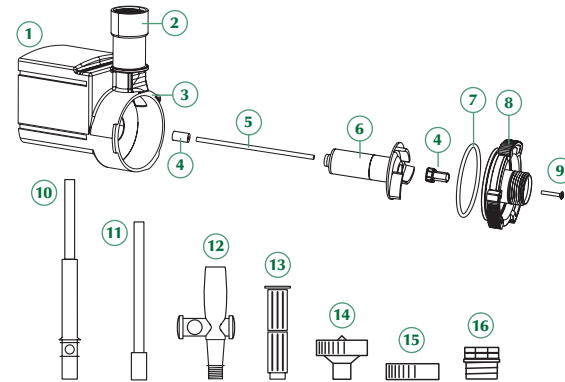
HYDRATECH MULTI 1500/2500/3250/4000



No.	Hydratech Multi 1500/2500/3250/4000 Part Description	Spare Code
1.	Pump motor unit	N/A
2.	'O' ring seal	1040785
3.	Pump outlet	N/A
4.	Impeller housing	N/A
5.	Impeller complete (1500 model)	1040822
	(2500 model)	1040839
	(3250/4000 model)	1040846
5A.	Impeller shaft locator	1040792
6.	Impeller cover (1500 model)	1040860
	(2500 model)	1040877
	(3250 model)	1040884
	(4000 model)	1040891
7.	24cm telescopic riser pipe	1040778
8.	17cm extension pipe with coupling	1021005
9.	Dual control 'T' piece	1040808
10.	Water bell large	1014144
11.	Daisy 3 stage	1040754

GETTING TO KNOW YOUR HYDRATECH MULTI PUMP

HYDRATECH MULTI 6000



No.	Hydratech Multi 6000 Part Description	Spare Code
1.	Pump motor unit	N/A
2.	Pump outlet	N/A
3.	Impeller housing	N/A
4.	Shaft locator	1017671
5.	Ceramic shaft and locator	1017664
6.	Impeller only	1017626
7.	Impeller cover 'O' ring	1017640
8.	Impeller cover	1017633
9.	Impeller cover screw	1017657
10.	24cm telescopic riser pipe	1040778
11.	17cm extension pipe with coupling	1021005
12.	Dual control 'T' piece	1040808
13.	Water bell large	1014144
14.	Daisy 3 stage	1040754
15.	Iris jet head only	N/A
16.	6000 'T' adapter	N/A

GETTING TO KNOW YOUR HYDRATECH MULTI PUMP

Pump performance / flow chart

CHOOSING A PUMP CHART Hydratech Multi flow rate in litres/hour

Head (cm)	800	1500	2500	3250	4000	6000
350						300
325						700
300						1100
275			250	200	300	1500
250			625	600	750	1900
225			900	1000	1125	2375
200		250	1125	1325	1450	2700
175		425	1300	1625	1700	3125
150		600	1550	1925	1950	3500
125		800	1700	2175	2200	3850
100	225	900	1850	2450	2550	4200
75	375	1125	2125	2725	2800	4600
50	530	1250	2300	2950	3200	5000
25	650	1375	2575	3175	3500	5400
0	790	1550	2750	3350	3800	5850
Model	800	1500	2500	3250	4000	6000

Technical Specification and Performance

HYDRATECH MULTI	800	1500	2500	3250	4000	6000
Cable Fitted	10m	10m	10m	10m	10m	10m
Voltage	230V	230V	230V	230V	230V	230V
Hertz	50Hz	50Hz	50Hz	50Hz	50Hz	50Hz
Watts	13	36	40	42	46	89
Safety Rating	IP68 CE	IP68 CE	IP68 CE	IP68 CE	IP68 CE	IP68 CE
Maximum Flow	790 ltr/hr	1550 ltr/hr	2750 ltr/hr	3350 ltr/hr	3800 ltr/hr	5850 ltr/hr
	174 gal/hr	341 gal/hr	606 gal/hr	737 gal/hr	837 gal/hr	1287 gal/hr
Maximum Lift	1.25m	2.3m	3m	2.75m	3m	3.7m
	4'1"	7'5"	9'8"	9'2"	9'8"	12'1"

INSTALLATION

Electrical installation



The power supply must meet the specifications on the product.

The pump is intended to be used with either a weatherproof cable connector or permanently connected to the fixed wiring in the main system other than by means of a plug and socket.

The cores in the supply cable are coloured in accordance with the following code: **Brown = Live, Blue = Neutral, Green/Yellow = Earth.**

The electric cable is permanently connected and sealed in the motor body. If the supply cable is damaged the pump must not be used.

Do not use the supply cable to lift the pump as this may cause damage.



WARNING - THIS PUMP MUST BE EARTHED

A Residual Current Device (RCD), also known as the Residual Current Circuit Breaker (RCCB), with a tripping current not exceeding 30mA must be installed in the supply circuit.

A means of disconnection from the supply having a contact separation of at least 3mm in all poles must be incorporated in the fixed wiring.

For permanent installations to the mains supply, it is necessary to conform to the regulations of the local electricity authority and this would include the use of a metal or plastic conduit to protect the cable.

Attention has been drawn to the fact that special rules may exist concerning the installation of your pond pump (i.e. local building regulations).

These pumps must not be used in swimming pools, or areas where people are in contact with the water.

Always disconnect the mains electricity supply whilst the equipment is being installed, repaired, maintained or handled. Consult a qualified electrician if in any doubt about wiring this product to the main supply.



Warning - The Hydratech Multi pump is provided with a thermal cut out that temporarily switches off the pump in case of overheating and the pump may automatically restart.

INSTALLATION

Locating your Hydratech Multi

The Hydratech Multi pump should be located on a firm and level base in the pond/water feature in a depth of at least 10cm, but no more than $\sqrt{2}$ m.

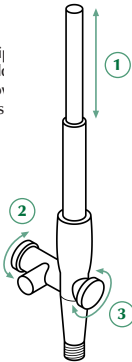
It is advisable to keep the pump off the bottom of the pond to avoid silt entering the pump causing excessive wear and increasing pre-filter cleaning.

Fountain

Make sure there is ample cable from mains supply. Place pump in desired location. Adjust telescopic riser pipe so fountain head is above surface of the pond. Fountain height can now be adjusted, see "Adjusting dual control 'T' piece" diagram below (not 800 model). See "Getting to know your Hydratech Multi" for parts and descriptions.

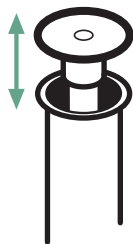
ADJUSTING DUAL CONTROL 'T' PIECE AND TELESCOPIC RISER P

- 1 Adjust height by pushing or pulling 24cm telescopic riser pipe. A 17cm extension pipe can be added if required (see "Getting to know your Hydratech Multi" for parts descriptions).
- 2 **1" OUTLET FLOW CONTROL VALVE**
Supply water features, waterfalls and filters by adding 1" hose. Adjust flow by turning flow control valve.
- 3 **FOUNTAIN FLOW CONTROL VALVE**
Adjust fountain jet flow by turning flow control valve.



BELL FOUNTAIN

Adjust bell by moving head higher for small bell and lower for a wider bell shape.



Tip: Ensure that any fountain, waterfall, filter or feature fitted does not empty water out of pond/water feature.

INSTALLATION

Water Feature / Filter / Waterfall

Install as for Fountain. Depending on water feature to be supplied, your Hydratech Multi can be used with the dual control 'T' piece 1" hose fitting (see "Adjusting dual control 'T' piece" diagram). Hose clips should be used to secure hose.

Tip: The larger 1" hose will give maximum performance when fitted to the Hydratech Multi 1500, 2500, 3250, 4000 or 6000.

MAINTENANCE & CLEANING



Warning - Failure to carry out routine maintenance leaving the pump under reduced or no flow conditions for long periods (i.e. blocked pre-filter cage) will result in a shorter pump life and will invalidate the guarantee.

Blagdon Hydratech Multi pumps are centrifugal pumps with a magnetic impeller movement driven by a watertight synchronous motor. They require minimum cleaning, only periodic cleaning of the pre-filter cage and impeller is necessary.

Cleaner

The use of Blagdon Pond Pump Cleaner will give improved performance and pump life by removing built-up lime scale and waste. Use before dismantling for easier and cleaner handling.

Routine Maintenance

Carry out routine maintenance when pump flow is visibly reduced.

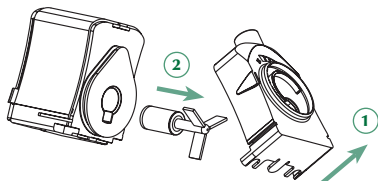
1. Switch off electricity.
2. Remove pump from pond (do not use the cable to lift the pump).
3. Open pre-filter cage and remove pump (see page 2). Wash thoroughly in fresh water. A blocked pre-filter cage will reduce the pump flow rate.

MAINTENANCE & CLEANING

Monthly Maintenance

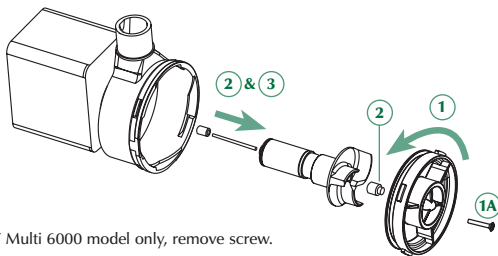
Following as for Routine Maintenance (steps 1 to 3).

800 MODEL: MONTHLY MAINTENANCE



- ① Remove impeller cover by pulling gently upwards from the base.
- ② Remove impeller from pump motor. Wash parts with fresh water carefully.

1500/2500/3250/4000/6000 MODELS: MONTHLY MAINTENANCE



- ①A HT Multi 6000 model only, remove screw.
- ① Remove impeller cover by turning anti-clockwise to release lock. Then pull firmly away from pump motor.
- ② Carefully remove impeller shaft locator and washer. Place in a safe place.
- ③ Remove impeller from pump motor. Wash parts with fresh water carefully.

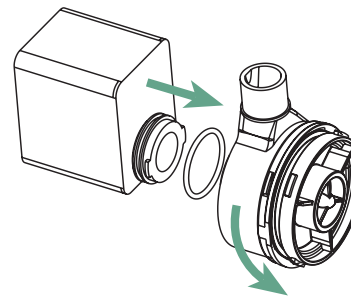
MAINTENANCE & CLEANING

Annual Maintenance

Following as for routine and monthly maintenance, once a year you should service your pump by using Blagdon Pond Pump Cleaner, (this may need to be done more frequently in hard water areas).

Dismantle pump and examine all parts for wear or damage, replacing any parts that show obvious wear and/or damage. (See "Getting to know your pump" for parts/description and replacement parts codes.) Particular care should be taken to examine the cable entry point and the cable; if there is any sign of damage the pump should be discarded. On models 1500, 2500, 3250 and 4000 also check 'O' ring seal (see diagram below)

1500/2500/3250/4000 MODELS: ANNUAL MAINTENANCE



To check the 'O' ring seal, turn impeller housing anti-clockwise and pull away pump motor. Remove and check seal.
Replace carefully.

Winter Storage

The pump can be run in the pond during the winter but care should be taken to ensure that it is fully immersed and cannot freeze solid. If the pump is not used during the winter, follow annual maintenance procedure and store frost-free in the house or garage until spring.

TROUBLESHOOTING

Problem

Low flow from pump

1. Follow routine cleaning procedure.
2. Follow monthly cleaning procedure.
3. Ensure pipe work is not blocked, leaking or is laid so that it gets crushed or kinked.
4. Keep the height that water is to be pumped from the water surface (called Head) to a minimum. The higher the head the lower the flow rate and the more wear on the pump.
5. Use the largest diameter, smoothest bore pond hose over the shortest distance and keep hose fittings to a minimum. This removes frictional loss of flow and so increases pump flow rates.

Poor fountain performance

- Reduced height.
- Jets blocked.

Clean flow adjuster and fountain head. Wash under a tap or hose. Blagdon Pond Pump Cleaner should be used to remove lime scale build-up/waste (see diagram) for improved results.



No flow from pump

1. Check power supply is on.
2. Check fuse and wiring (SEE ELECTRICAL INSTALLATION).
3. Follow low flow procedure as above.

If none of the above works contact Interpet (Blagdon) Consumer Advice Department (See Faults problem procedure Page 13).

IMPORTANT

FAULTS - PROBLEMS PROCEDURE

Before returning your Hydratech Multi pump to your dealer or contacting our Consumer Advice Department, please carry out the following steps. This will solve most problems quickly and easily.

1. Ensure electrical procedure has been followed fully. Check fuse and any cable connectors/switch boxes.

NOTE: If the pump has overheated the thermal overload will temporarily switch off the pump.

2. (a) Follow routine maintenance and check pump. (b) Follow monthly maintenance and check pump. (c) Follow troubleshooting guide. (d) Follow annual maintenance guide.
3. Return pump to point of purchase for inspection and advice (you may need proof of purchase).

Consumer Advice contact details

Interpet (Blagdon) Consumer Advice Department
Vincent Lane, Dorking, Surrey RH4 3YX

Telephone: 0845 226 7437 (local call charge only)
(Monday to Friday 10am to 4pm except Bank Holidays - Times may vary)

Fax: 01306 876712 **E-mail:** customercare@interpet.co.uk

GUARANTEE

This product is guaranteed against defects in material and workmanship for 3 years from the date of purchase, under normal usage. **The guarantee DOES NOT APPLY in case of improper use, negligence, lack of maintenance or accidental damage either to the pump or to the impeller or impeller shaft.** If the pump fails due to a manufacturing fault within this period it will be either repaired or replaced free of charge. Liability is limited to replacement of the faulty product only, no other costs will be reimbursed.

This guarantee is not transferable and does not affect your statutory rights. This guarantee does not confer any rights other than those expressly set out above. Excludes impeller, which may require replacing annually. If any parts need replacing, spares are available from your retailer.